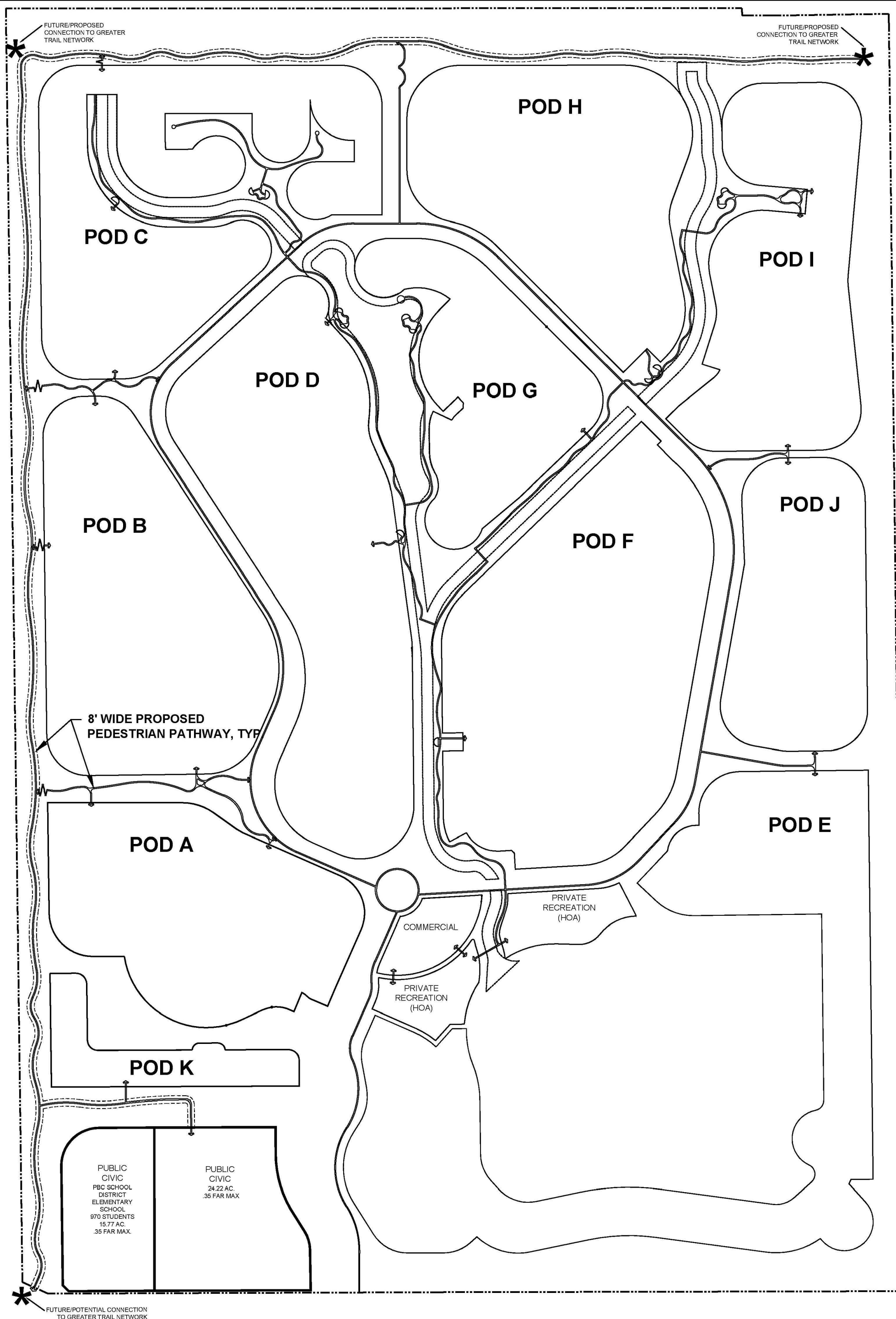


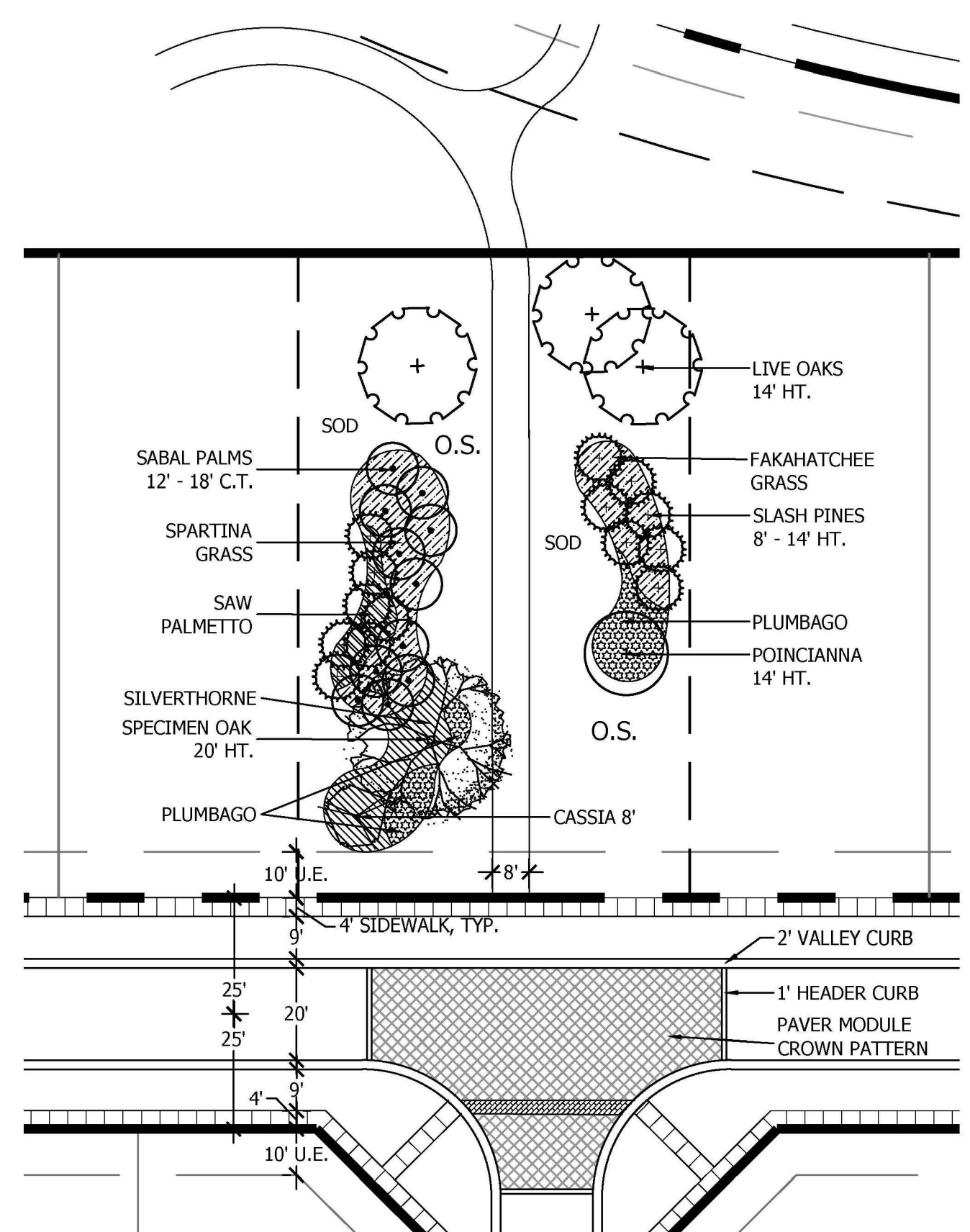
PEDESTRIAN SYSTEM

SCALE: 1" = 600'



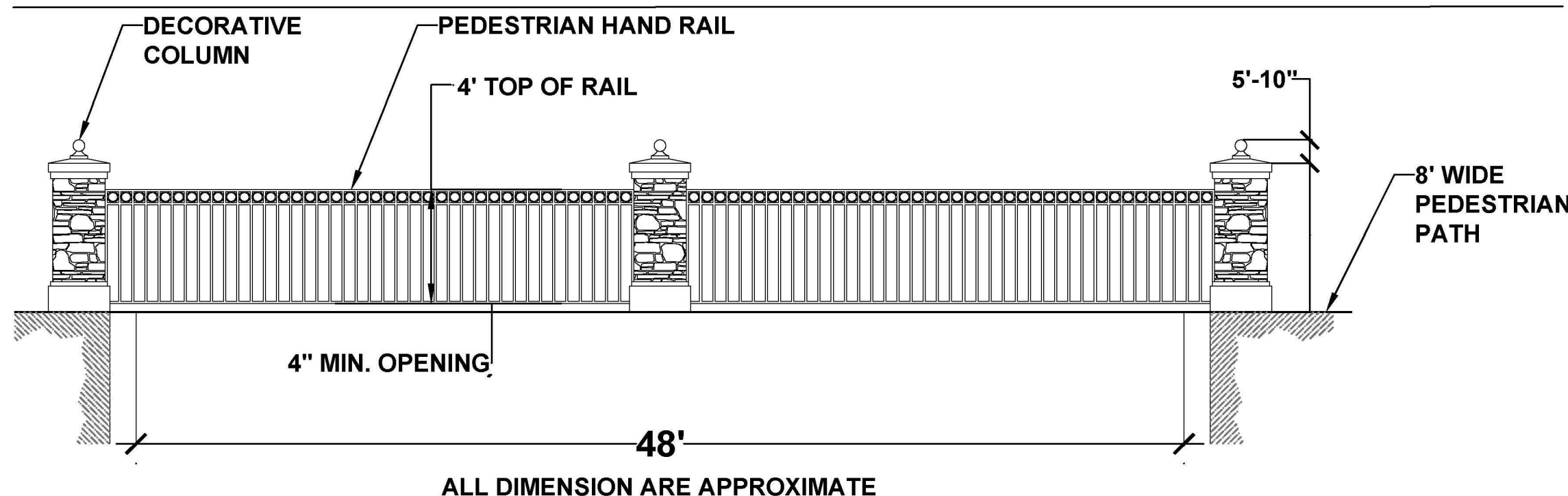
FOCAL POINT FP-7- PLAN

1" = 30'-0"



PEDESTRIAN BRIDGE DETAIL

SCALE: 1" = 60'

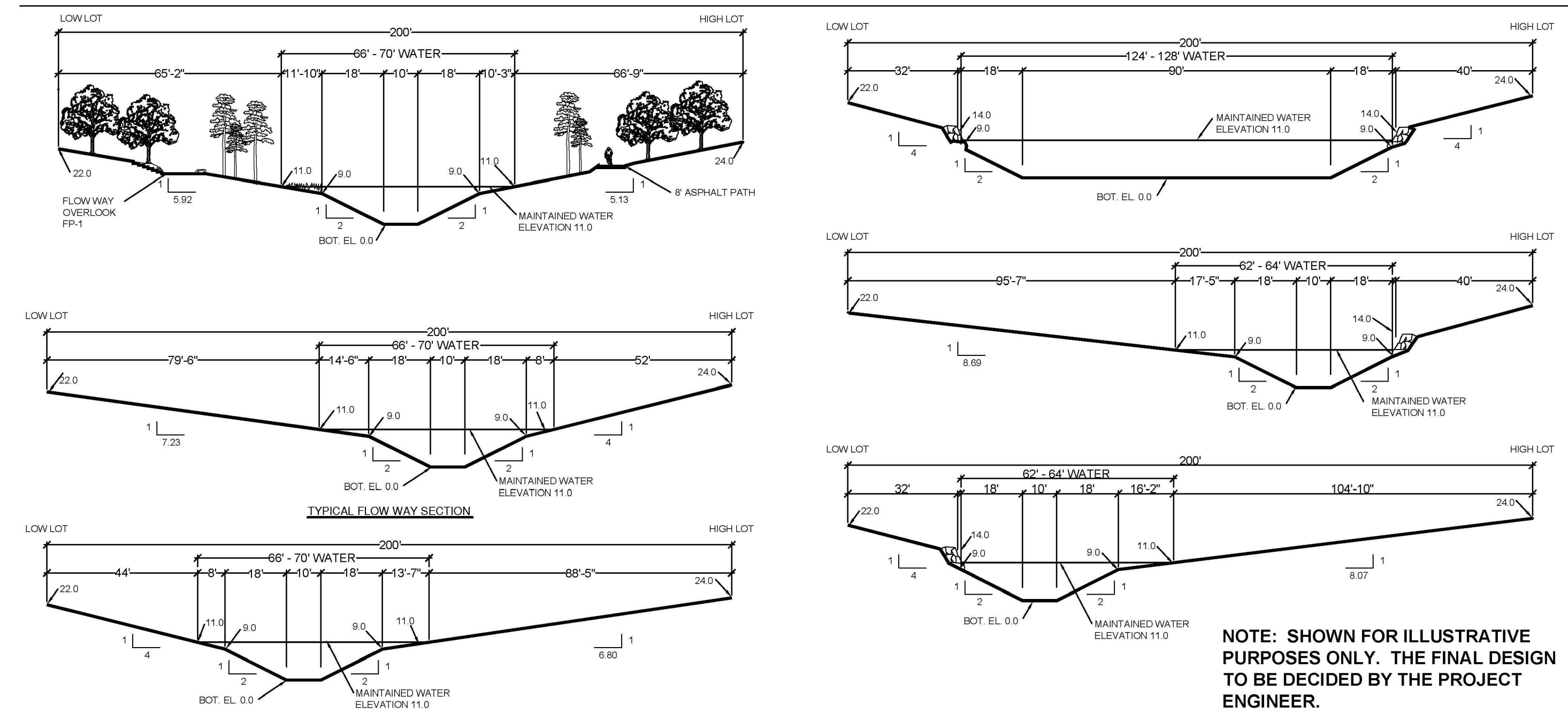


8' Wide Pedestrian Bridge

TYPE: (RAIL) ORNAMENTAL IRON OR COMMERCIAL GRADE ALUMINIUM RAIL (BRIDGE) TBD

SECTIONS- FLOW WAY

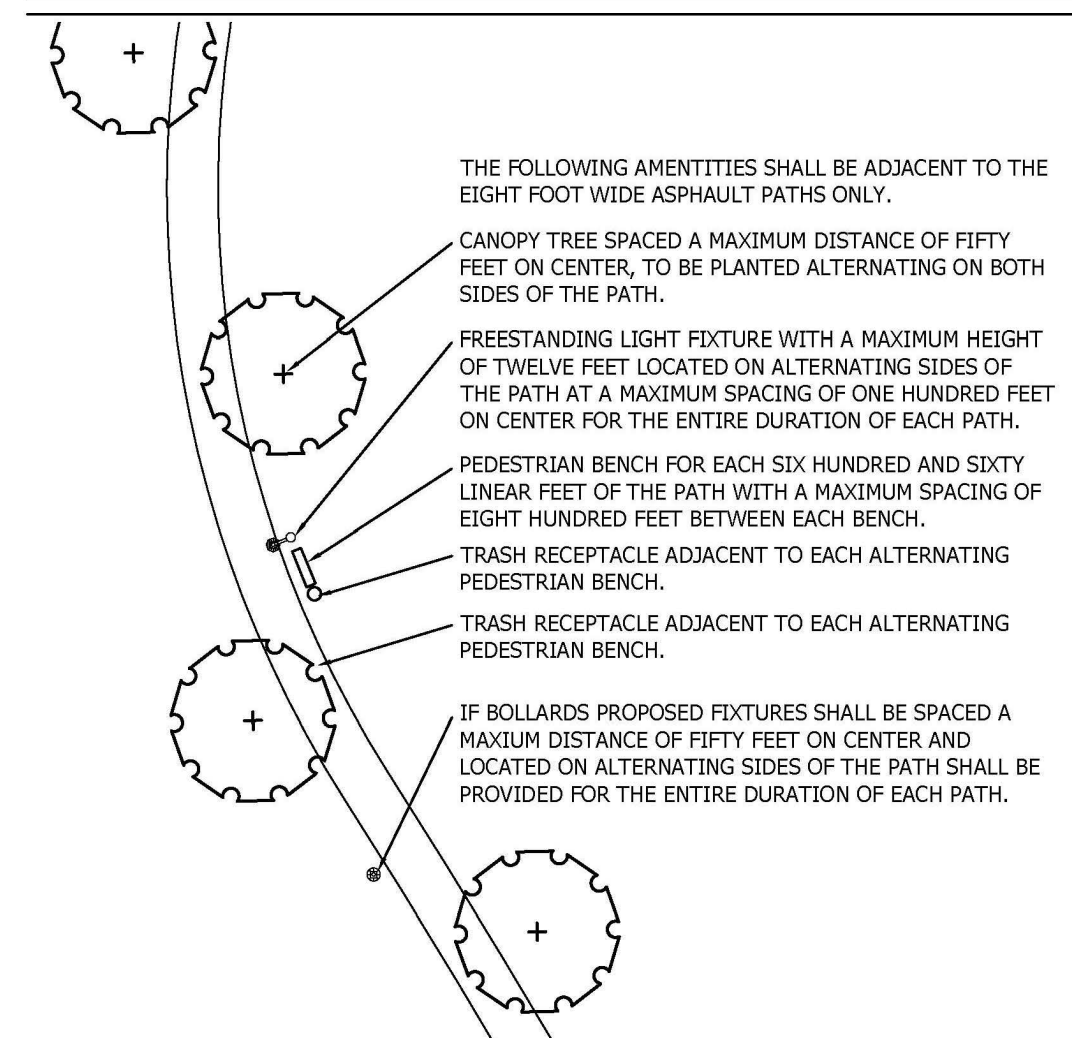
1" = 30'-0"



NOTE: SHOWN FOR ILLUSTRATIVE PURPOSES ONLY. THE FINAL DESIGN TO BE DECIDED BY THE PROJECT ENGINEER.

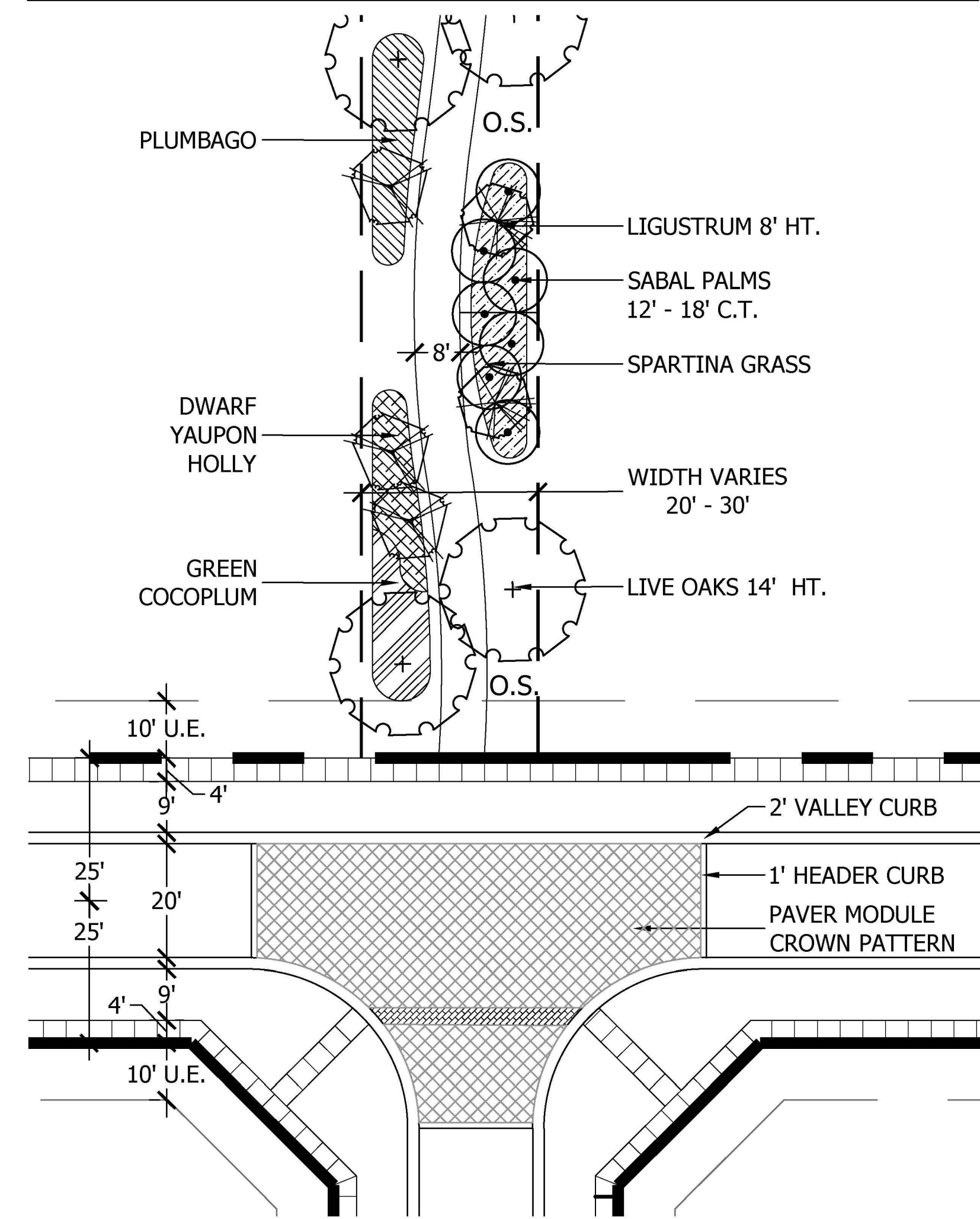
8' WIDE PATHWAY

1'-0" = 30'-0"



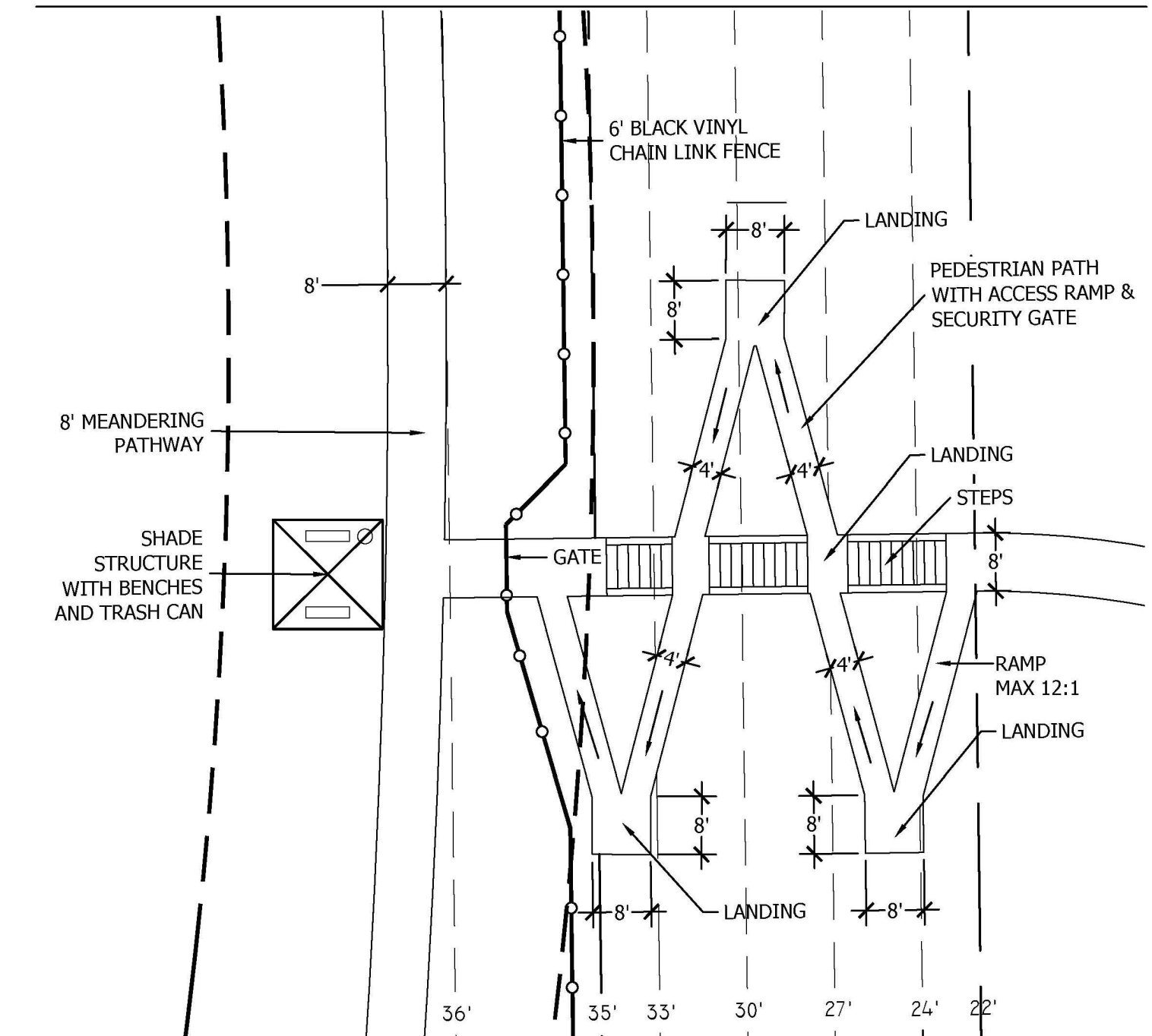
FOCAL POINT FP-8- PLAN

1'-0" = 20'-0"



PEDESTRIAN PATH

SCALE: 1" = 20'



PBC Amendments:

PBC Zoning Stamp:

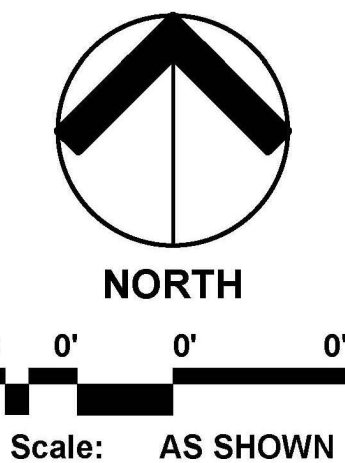


Urban Planning & Design Landscape Architecture Communication Graphics

The Offices at City Place
477 S. Rosemary Ave., Suite 225
West Palm Beach, FL 33401
561.366.1100 FAX 561.366.1111
www.udkstudios.com
#LCC000035

Copyright:
All ideas, designs, arrangements, and plans represented by this drawing are owned by and the property of the designer, and were created for the exclusive use of the specified project. These ideas, designs, arrangements or plans shall not be used by, or disclosed to any person, firm, or corporation without the written permission of the designer.

Highland Dunes P.U.D.
Preliminary Regulating Plan
Palm Beach County, Florida



Date: 02-20-2013
Project No.: 13-001.000
Designed By: DEM
Drawn By: DEM
Checked By: CWV

Revision Dates:
02-20-2013 Rezoning Submittal DEM
03-25-2013 CDRO Interim Resub DEM
05-24-2013 CDRO Interim Resub DEM